

SoloManage

VISTA IIS GUIDE

2008

VISTA IIS guide

Copyright ©2008 Quartile Software Ltd. All rights reserved.

No part of this publication may be reproduced, stored in a retrieval system, or transmitted in any form by any means without the prior permission of the copyright owners.

Other names and brands may be claimed as the property of others. Information regarding third party products is provided solely for educational purposes. Quartile Software Ltd. Is not responsible for the performance or support of third party products and does not make any representations or warranties whatsoever regarding quality, functionality, or compatibility of these devices or products.

Quartile Software Limited, 80 George Street, Edinburgh, EH2 3BU, UK

INDEX

INTRODUCTION	1
USING SOLOMANAGE WITH IIS ON WINDOWS VISTA	2



SoloManage

VISTA IIS GUIDE

INTRODUCTION

This guide illustrates how to make a simple settings change in Windows Vista, to be able to install SoloManage easily.

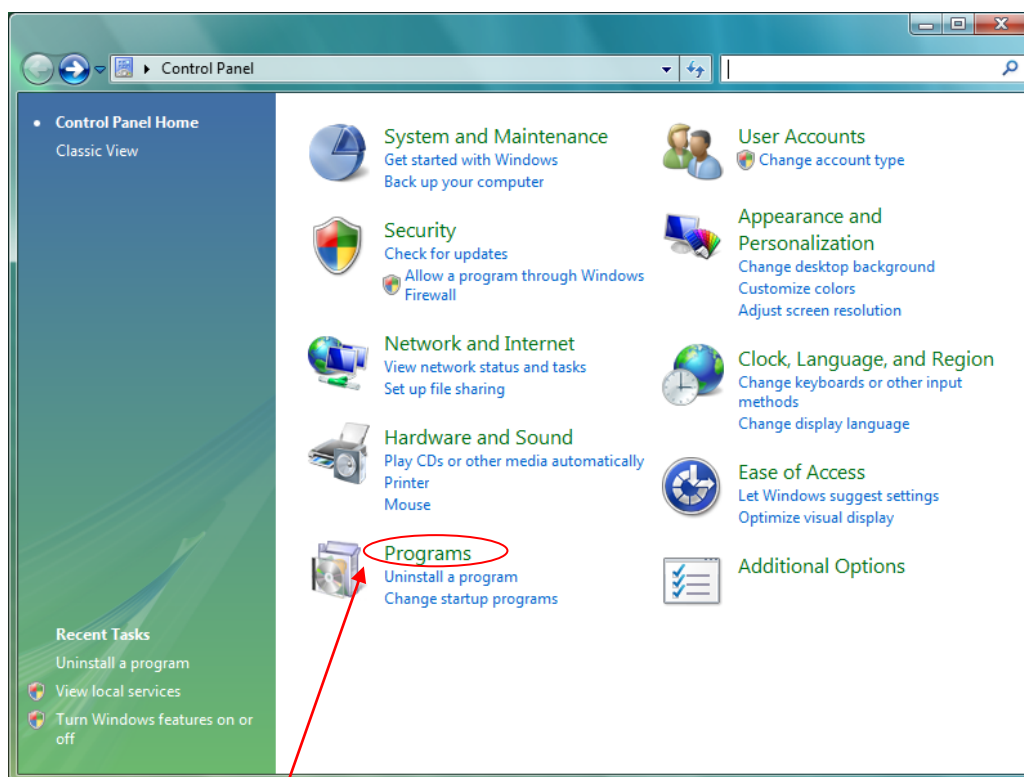
After using this guide, it is recommended that you also read the Installation and Quick start guide, which provides an introduction to the SoloManage software

USING SOLOMANAGE WITH IIS ON WINDOWS VISTA

Internet Information Services (IIS) is a standard Windows component. If you are using Windows Vista, there are some simple settings adjustments which need to be made in the Windows control panel, so that the SoloManage software can be easily installed.

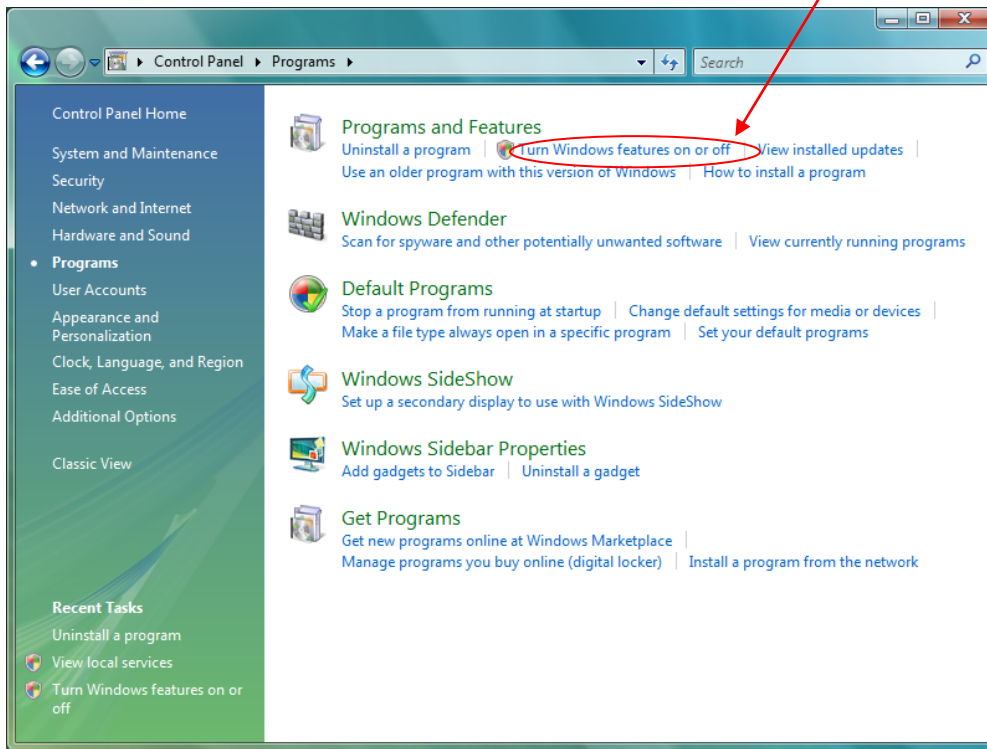
To enable IIS and IIS compatibility on Vista, follow these steps:

1. From the Vista Start Menu, select "Control Panel", to display this window:

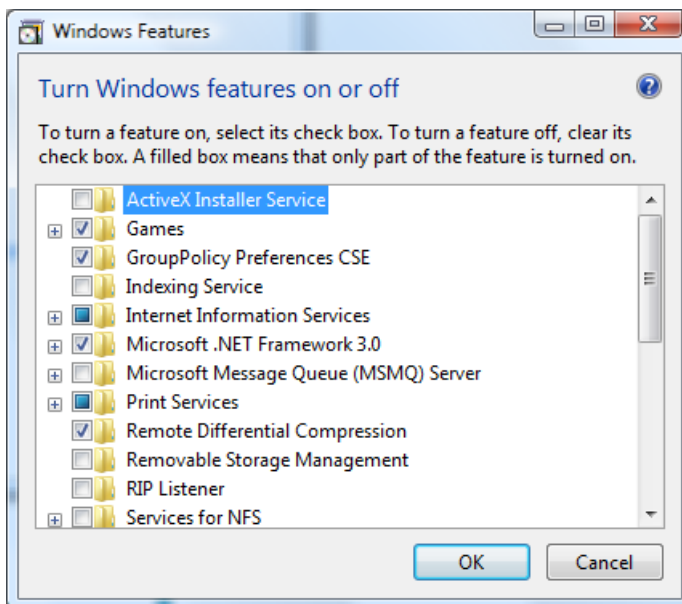


Click the link headed "Programs", to display the next window.

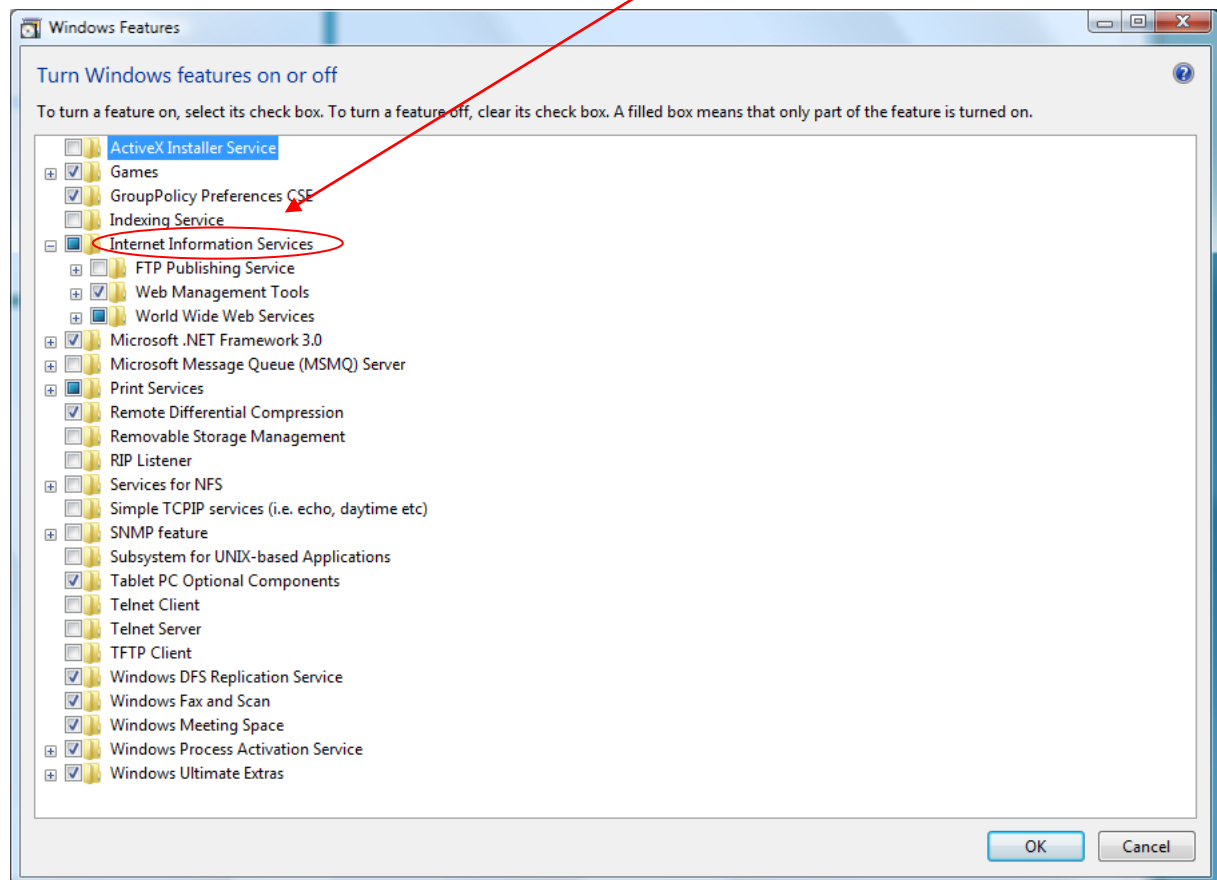
2. From the Control Panel-> Programs window, click the link “Turn Windows features on or off”



3. The Windows Features window will then display details of the Windows settings you have enabled:



4. Expand the feature section with the title “Internet Information Services”



Ensure that the sub-section “Web Management Tools”, and its further sub-sections are all checked. Then expand the sub-section “World Wide Web Services”, and check the sub-sections marked in the following window:

5. Ensure that the final section and sub-sections are checked like this:

